



SRI SIVANI COLLEGE OF PHARMACY

(Under the Management of Sri Sivani Educational Society, Srikakulam)
(Estd.2007, Approved by PCI-New Delhi and Affiliated to JNTU, Gurajada-Vizianagaram)
N.H-16, Chilakapalem Jn., Etcherla Mandal, Srikakulam Dist - 532402.

MING ARALIA

BOTINICAL NAME: *POLYSCIAS*

FAMILY: *Araliaceae*

SYNONYMS:

ENGLISH: Nothopanaxfruticosus

HINDI: Mingaraaliya

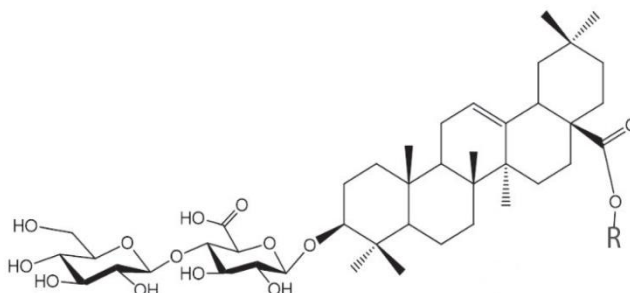
TAMIL: Minarāliyā

TELUGU: Miṅgarāliyā



CHEMICAL CONSTITUENTS:

- ❖ It contains 8 types of saponins such as glucosides, tannins, about 20 types of amino acids, alkaloids, and B vitamins



USES:

- ❖ Used in traditional medicine as a tonic
- ❖ Noted to have anti-inflammation
- ❖ Anti-toxin
- ❖ Antibacterial
- ❖ Antifungal properties
- ❖ It is also used against dysentery
- ❖ Neuralgia, rheumatism
- ❖ Digestion-related ailments
- ❖ Young leaves and shoots are cooked as vegetable and flavouring
- ❖ Treatment of various diseases, such as hepatitis, rheumatoid arthritis, bruises, lumps and carbuncles.